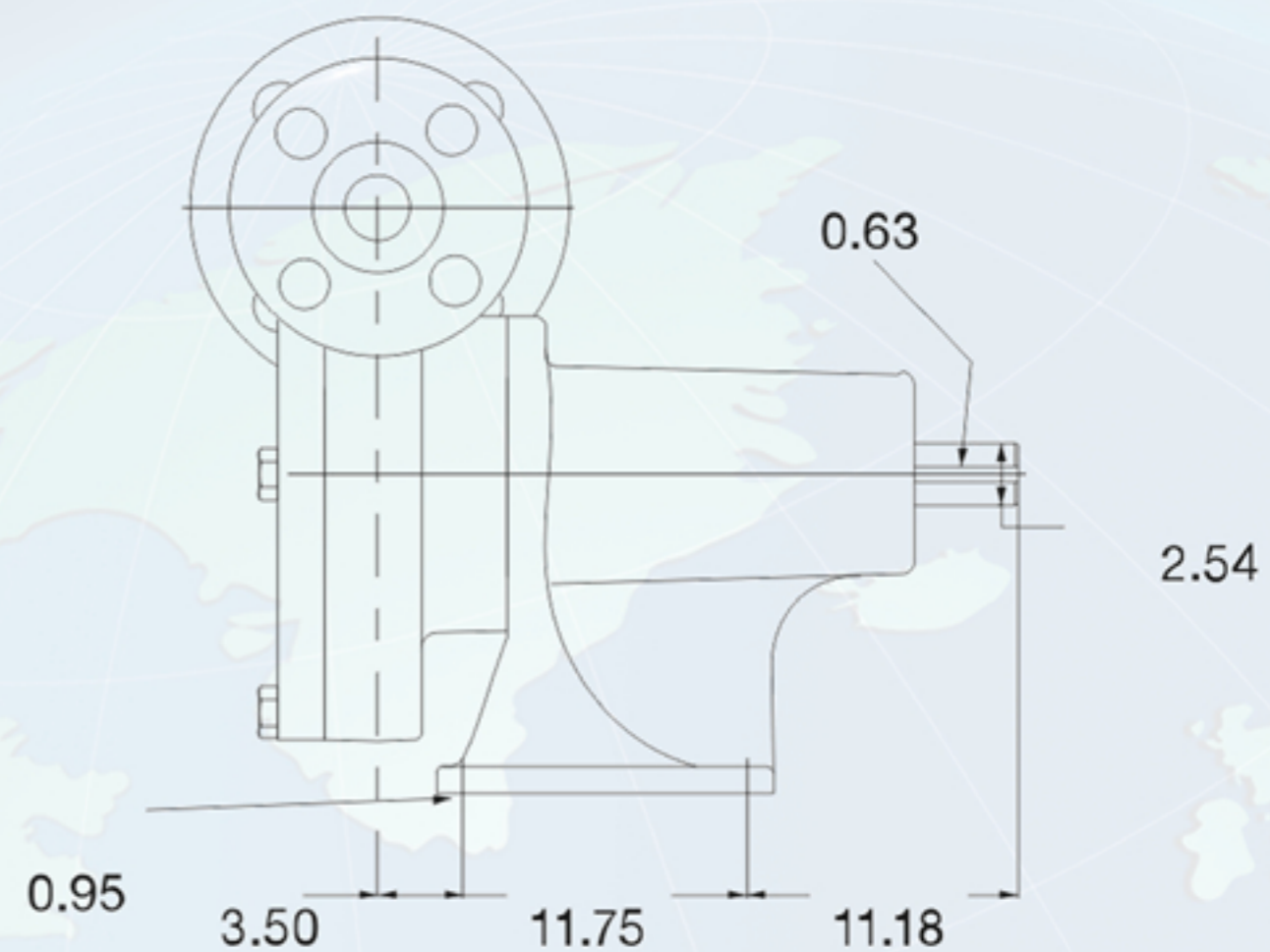
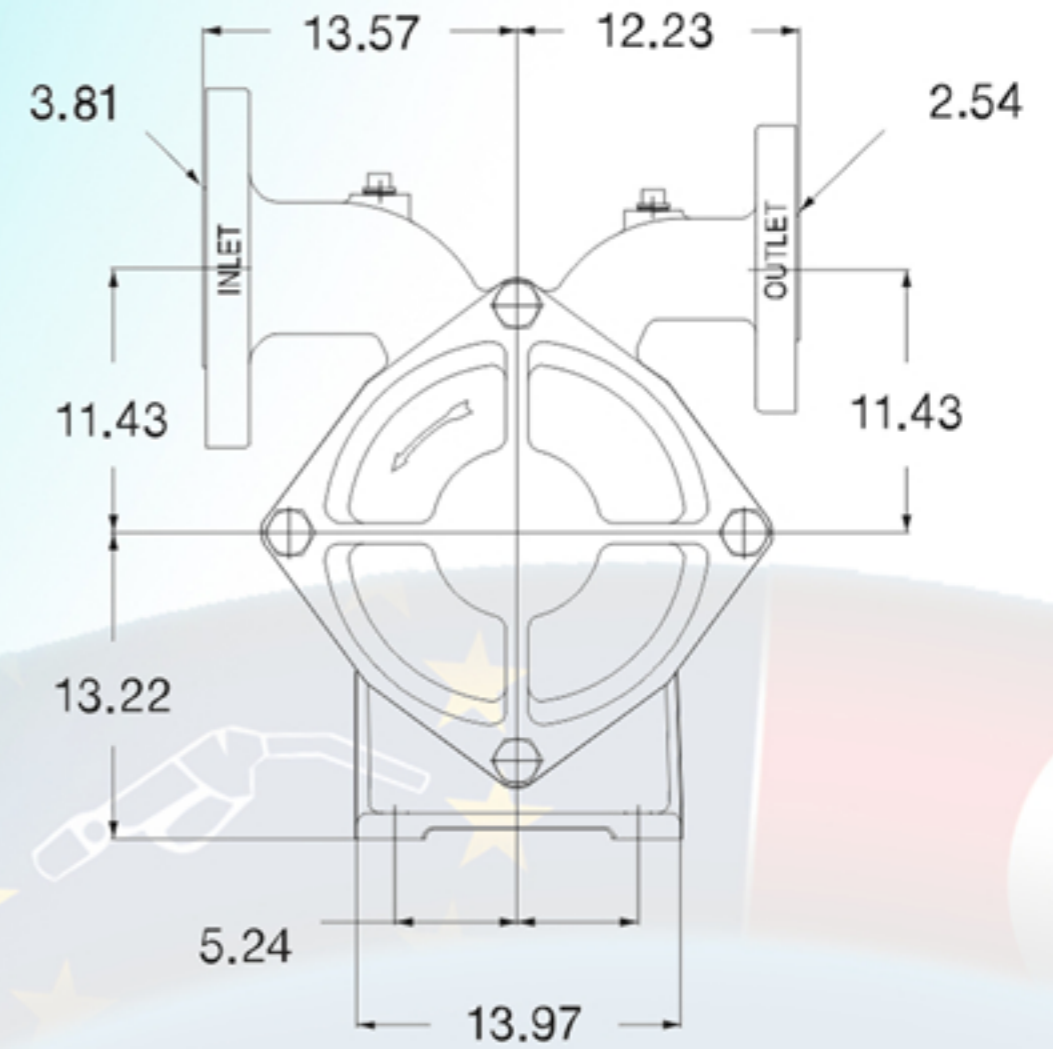
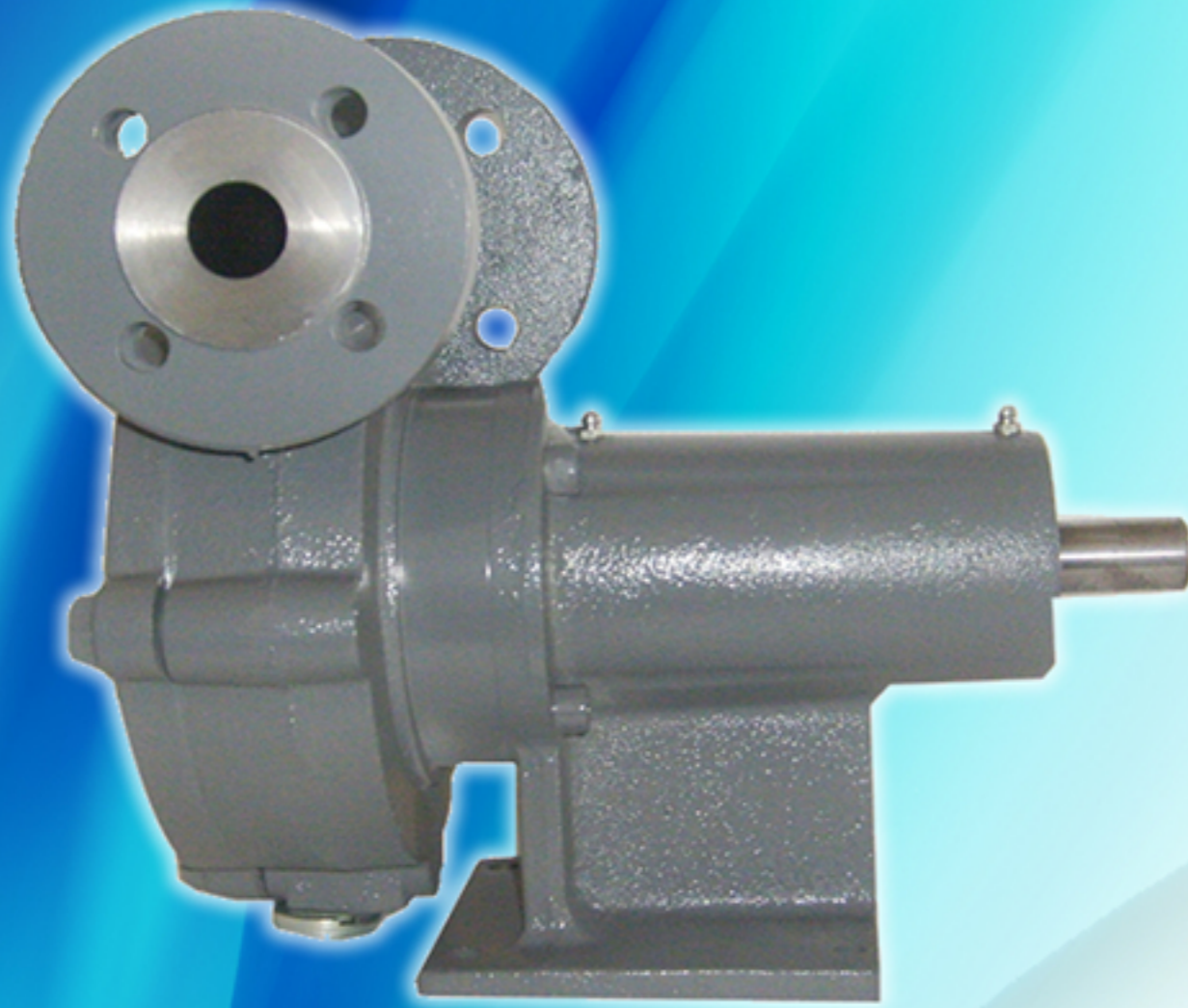


Regenerative Turbine LPG Pump - RT150



Europump RT-150 pumps are designed as a regenerative turbine design for continuous duty on light liquids. Produce a maximum differential pressure of 10.3bar and flow rate upto 132 lt/min.

General Features :

- Excellent for low flows and relatively high head pressures
- Linear performance curve
- Floating Impeller design - No metal to metal contact
- Impeller is the only moving part - minimal wear parts
- Extremely quiet and free of vibration
- Smooth continuous flow
- Made in Italy

Applications :

- Autogas dispensing
- Cylinder filling
- Vaporizer feed
- Aerosol propellant
- Direct burner feed
- Bulk transfer

Technical Specifications :

Working pressure 27.6 bar Max.
 Differential pressure 17.2 bar Max.
 Impeller Bronze O-ring Buna-N
 Seal seat Silicon carbide
 Inlet 1-1/2"
 Outlet 1"
 Motor 3450 rpm @ 60 Hz or 2880 rpm @ 50 Hz
 3.5 Kw or 5.5 Kw,
 Exproof ATEX Certificated Motors
 Between -35°C and 100°C

Temperature

Performance Curve :

